

## COVID-19 Surveillance for Forsyth County, NC as of September 19, 2020

**Table 1. Summary Statistics for Forsyth County, NC Total Positive COVID-19 Tests as of September 19, 2020**

<i>Total FC Residents who were tested and had a positive result</i>		<i>6,684</i>
Gender*		
	Female	52.9%
	Male	47.2%
Age Group*		
	≤14yrs	8.9%
	15-24 yrs	20.9%
	25-34 yrs	18.0%
	35-44 yrs	17.4%
	45-54 yrs	14.4%
	55-64 yrs	10.0%
	≥65 yrs	10.3%
	Unknown <sup>1</sup>	0.1%
Race/Ethnicity*		
	Asian	2.3%
	Black, non-Hispanic/Latino	15.5%
	Hispanic/Latino	45.6%
	White, non-Hispanic/Latino	24.7%
	Unknown <sup>1</sup>	11.9%

Forsyth County Department of Public Health, Epidemiology & Surveillance

<sup>1</sup>Unknown cases: The provider did not complete the age and/or race/ethnicity section of the testing requests to authorized labs.

\*Totals may be off due to rounding

**Table 2. Zip Code Distribution of Forsyth County, NC Residents who Received a COVID-19 Lab Test as of September 19, 2020**

Zip Code <sup>1</sup>	Area	Estimated Pop. Count <sup>2</sup>	Total # of Persons Tested <sup>3</sup>	% of Pop who have been Tested*	Total # of Persons who Tested Positive <sup>3</sup>	% of Pop who Tested positive*	% of Pop who were Tested and had a Positive Diagnosis*	Rate per 1,000 Pop for FC Pop who have been tested	Rate per 1,000 Pop for FC Pop who Tested
27009	Belews Creek	2,647	319	12.1%	12	0.5%	3.8%	120.5	4.5
27010	Bethania	359	43	12.0%	2	0.6%	4.7%	119.8	5.6
27012	Clemmons	20,563	4,087	19.9%	312	1.5%	7.6%	198.8	15.2
27023	Lewisville	13,999	1,744	12.5%	149	1.1%	8.5%	124.6	10.6
27040	Pfafftown	10,893	1,682	15.4%	123	1.1%	7.3%	154.4	11.3
27045	Rural Hall	3,216	1,408	43.8%	165	5.1%	11.7%	437.8	51.3
27050	Tobaccoville	2,680	487	18.2%	31	1.2%	6.4%	181.7	11.6
27051	Walkertown	5,150	1,087	21.1%	98	1.9%	9.0%	211.1	19.0
27101	Winston-Salem	18,901	3,398	18.0%	320	1.7%	9.4%	179.8	16.9
27103	Winston-Salem	33,208	5,438	16.4%	599	1.8%	11.0%	163.8	18.0
27104	Winston-Salem	28,485	4,610	16.2%	434	1.5%	9.4%	161.8	15.2
27105	Winston-Salem	39,568	6,979	17.6%	1,041	2.6%	14.9%	176.4	26.3
27106	Winston-Salem	45,015	7,036	15.6%	830	1.8%	11.8%	156.3	18.4
27107	Winston-Salem	46,963	7,287	15.5%	1,030	2.2%	14.1%	155.2	21.9
27109	Winston-Salem	2,539	50	2.0%	50	2.0%	100.0%	19.7	19.7
27127	Winston-Salem	34,138	6,081	17.8%	751	2.2%	12.3%	178.1	22.0
27284	Kernersville	51,136	6,303	12.3%	707	1.4%	11.2%	123.3	13.8
		359,460	58,039	16.1%	6,654	1.9%	11.5%	161.5	18.5

Forsyth County Department of Public Health, Epidemiology &amp; Surveillance Unit

<sup>1</sup> Excludes areas of High Point, Germantown and King that are in Forsyth County<sup>2</sup> Estimated population counts for zip codes are from the Bureau of Census, Census Data by Zip Code. Except for Belews Creek (2012 population estimate), all other estimates are for 2018.<sup>3</sup> Differences in total number of residents tested (108) and total number of residents who had a positive lab (30) are due to incomplete street addresses and/or zip codes that were omitted because the majority of their populations are in neighboring counties. CVS's total number of tests completed for Forsyth County residents are excluded from the total number of tests to date because the data was unavailable.

\*Totals may be off due to rounding

**Table 3. Race/Ethnicity-specific Summary Statistics for Forsyth County, NC COVID-19 Positive Lab Results Based on Age Groups as of September 19, 2020**

Race/Ethnicity/ Age Groups	Asian		Black, non-Hispanic/Latino		Hispanic/Latino		White, non-Hispanic/Latino		Unknown <sup>1</sup>		Total	
	Case Count	%	Case Count	%	Case Count	%	Case Count	%	Case Count	%	Case Count	%
≤14yrs	4	2.6%	72	6.9%	385	12.6%	80	4.9%	56	7.1%	597	8.9%
15-24 yrs	23	14.8%	146	14.1%	640	21.0%	361	21.9%	224	28.2%	1,394	20.9%
25-34 yrs	27	17.4%	186	17.9%	597	19.6%	264	16.0%	129	16.2%	1,203	18.0%
35-44 yrs	35	22.6%	146	14.1%	671	22.0%	205	12.4%	108	13.6%	1,165	17.4%
45-54 yrs	37	23.9%	163	15.7%	446	14.6%	212	12.9%	107	13.5%	965	14.4%
55-64 yrs	16	10.3%	140	13.5%	209	6.9%	218	13.2%	83	10.5%	666	10.0%
≥65 yrs	13	8.4%	185	17.8%	99	3.2%	308	18.7%	85	10.7%	690	10.3%
Unknown					2	0.1%			2	0.3%	4	0.1%
<b>Total</b>	<b>155</b>	<b>100.0%</b>	<b>1,038</b>	<b>100.0%</b>	<b>3,049</b>	<b>100.0%</b>	<b>1,648</b>	<b>100.0%</b>	<b>794</b>	<b>100.0%</b>	<b>6,684</b>	<b>100.0%</b>

Forsyth County Department of Public Health, Epidemiology &amp; Surveillance Unit

<sup>1</sup>Unknown cases: The provider did not complete the age and/or race/ethnicity section of the electronic testing requests to authorized laboratories.

**Table 4. Summary Statistics for Forsyth County, NC Reported Resident Deaths as of September 19, 2020**

Total FC Residents who had a reported positive COVID-19 test result	6,684
<b>Total Number of Reported FC COVID-19 Resident Deaths</b>	<b>94</b>
Percentage of FC COVID-19 Cases that resulted in death	1.4%
<b>Total Number of Reported FC COVID-19 Resident Deaths</b>	<b>94</b>
Gender	
Female	44
Male	50
Age Group	
≤14yrs	0
15-24 yrs	0
25-34 yrs	2
35-44 yrs	1
45-54 yrs	6
55-64 yrs	19
≥65 yrs	66
Race/Ethnicity	
Asian	1
Black, non-Hispanic/Latino	31
Hispanic/Latino	19
White, non-Hispanic/Latino	43

Forsyth County Department of Public Health, Epidemiology & Surveillance Unit

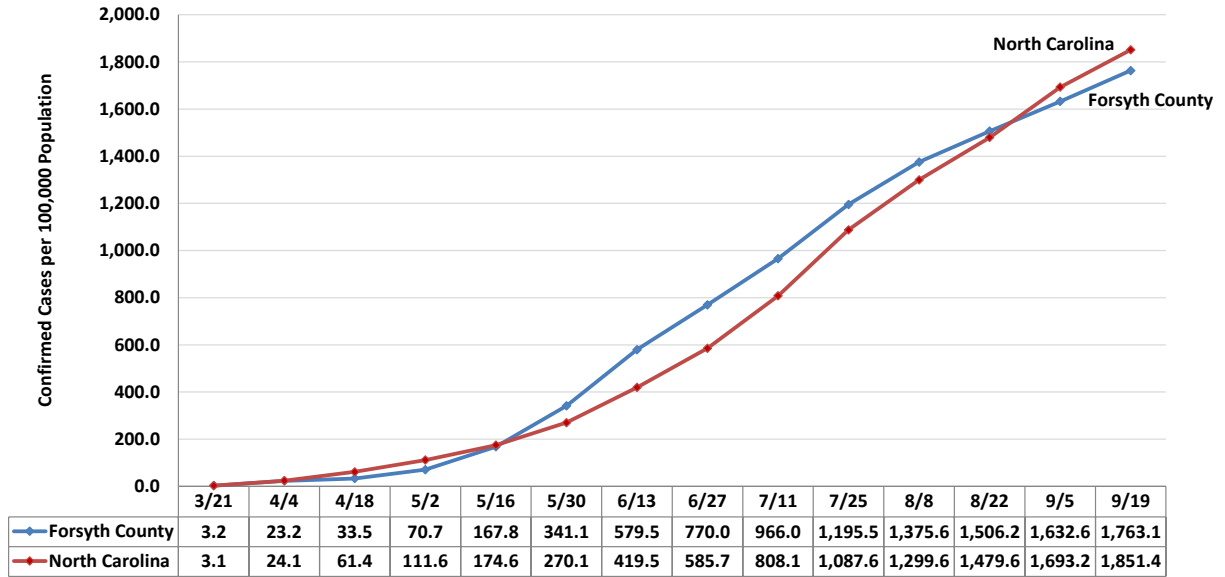
**Table 5. Confirmed COVID-19 Cases per 100,000 Population for Forsyth County, Peer Counties & North Carolina as of September 19, 2020**

Jurisdiction	Case Count	Rate <sup>1</sup>
Forsyth	6,684	1,763.1
Durham	7,486	2,363.5
Guilford	8,064	1,511.0
Mecklenburg	27,431	2,507.6
Wake	16,812	1,539.1
North Carolina	192,247	1,851.4

Forsyth County Department of Public Health, Epidemiology & Surveillance Unit

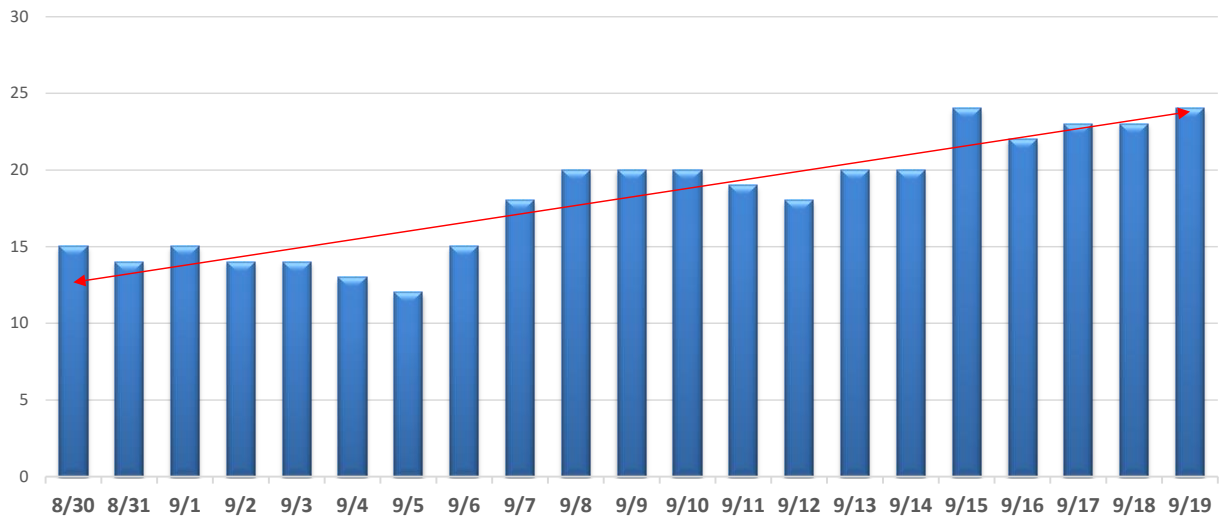
<sup>1</sup>Rate is per 100,000 population

**Figure 1. Trend in Confirmed COVID-19 Cases per 100,000 Population Forsyth County & North Carolina as of September 19, 2020**



Forsyth County Department of Public Health, Epidemiology & Surveillance Unit

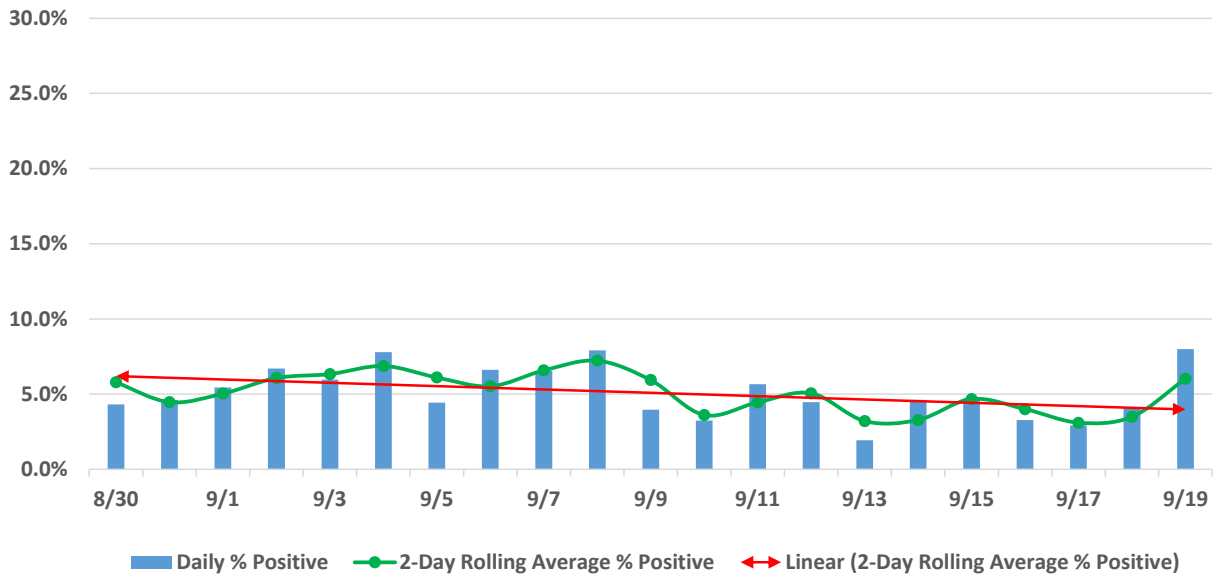
**Figure 2. Trend in the Reported Number of Forsyth County, NC Residents who are Hospitalized due to a COVID-19 Diagnosis from September 5, 2020 to September 19, 2020\***



\*Hospital numbers shown in this chart are from NC COVID, and healthcare partners when provided

Forsyth County Department of Public Health, Epidemiology & Surveillance Unit

Figure 3. Forsyth County, NC COVID-19 2-Day Rolling Average % Positive  
August 30, 2020 to September 19, 2020



Forsyth County Department of Public Health, Epidemiology & Surveillance Unit