

COVID-19 Surveillance for Forsyth County, NC as of September 12, 2020

Table 1. Summary Statistics for Forsyth County, NC Total Positive COVID-19 Tests as of September 12, 2020

Total FC Residents who were tested and had a positive result		6,535
Gender*		
	Female	52.6%
	Male	47.4%
Age Group*		
	≤14yrs	9.1%
	15-24 yrs	20.5%
	25-34 yrs	18.0%
	35-44 yrs	17.7%
	45-54 yrs	14.5%
	55-64 yrs	10.0%
	≥65 yrs	10.3%
	Unknown ¹	0.1%
Race/Ethnicity*		
	Asian	2.5%
	Black, non-Hispanic/Latino	15.2%
	Hispanic/Latino	45.7%
	White, non-Hispanic/Latino	23.6%
	Unknown ¹	13.1%

Forsyth County Department of Public Health, Epidemiology & Surveillance Unit

¹Unknown cases: The provider did not complete the age and/or race/ethnicity section of the testing requests to authorized labs.

Table 2. Zip Code Distribution of Forsyth County, NC Residents who Received a COVID-19 Lab Test as of September 12, 2020

Zip Code ¹	Area	Estimated Pop. Count ²	Total # of Persons Tested ³	% of Pop who have been Tested*	Total # of Persons who Tested Positive ³	% of Pop who Tested positive*	% of Pop who were Tested and had a Positive Diagnosis*	Rate per 1,000 Pop for FC Pop who have been tested	Rate per 1,000 Pop for FC Pop who Tested Positive
27009	Belews Creek	2,647	295	11.1%	12	0.5%	4.1%	111.4	4.5
27010	Bethania	359	39	10.9%	2	0.6%	5.1%	108.6	5.6
27012	Clemmons	20,563	3,857	18.8%	298	1.4%	7.7%	187.6	14.5
27023	Lewisville	13,999	1,648	11.8%	149	1.1%	9.0%	117.7	10.6
27040	Pfafftown	10,893	1,549	14.2%	120	1.1%	7.7%	142.2	11.0
27045	Rural Hall	3,216	1,336	41.5%	162	5.0%	12.1%	415.4	50.4
27050	Tobaccoville	2,680	461	17.2%	33	1.2%	7.2%	172.0	12.3
27051	Walkertown	5,150	1,028	20.0%	94	1.8%	9.1%	199.6	18.3
27101	Winston-Salem	18,901	3,203	16.9%	313	1.7%	9.8%	169.5	16.6
27103	Winston-Salem	33,208	5,093	15.3%	590	1.8%	11.6%	153.4	17.8
27104	Winston-Salem	28,485	4,249	14.9%	426	1.5%	10.0%	149.2	15.0
27105	Winston-Salem	39,568	6,619	16.7%	1,028	2.6%	15.5%	167.3	26.0
27106	Winston-Salem	45,015	6,520	14.5%	819	1.8%	12.6%	144.8	18.2
27107	Winston-Salem	46,963	6,892	14.7%	1,026	2.2%	14.9%	146.8	21.8
27109	Winston-Salem	2,539	33	1.3%	33	1.3%	100.0%	13.0	13.0
27127	Winston-Salem	34,138	5,691	16.7%	736	2.2%	12.9%	166.7	21.6
27284	Kernersville	51,136	5,931	11.6%	668	1.3%	11.3%	116.0	13.1
		359,460	54,444	15.1%	6,509	1.8%	12.0%	151.5	18.1

Forsyth County Department of Public Health, Epidemiology & Surveillance Unit

¹ Excludes areas of High Point, Germanton and King that are in Forsyth County² Estimated population counts for zip codes are from the Bureau of Census, Census Data by Zip Code. Except for Belews Creek (2012 population estimate), all other estimates are for 2018.³ Differences in total number of residents tested (98) and total number of residents who had a positive lab (26) are due to incomplete street addresses and/or zip codes that were omitted because the majority of their populations are in neighboring counties. CVS's total number of tests completed for Forsyth County residents are excluded from the total number of tests to date because the data was unavailable.

*Totals may be off due to rounding

Table 3. Race/Ethnicity-specific Summary Statistics for Forsyth County, NC COVID-19 Positive Lab Results Based on Age Groups as of September 12, 2020

Race/Ethnicity/ Age Groups	Asian		Black, non-Hispanic/Latino		Hispanic/Latino		White, non-Hispanic/Latino		Unknown ¹		Total	
	Case Count	%	Case Count	%	Case Count	%	Case Count	%	Case Count	%	Case Count	%
≤14yrs	4	2.5%	67	6.8%	386	12.9%	77	5.0%	59	6.9%	593	9.1%
15-24 yrs	21	13.1%	144	14.5%	610	20.4%	318	20.6%	245	28.5%	1,338	20.5%
25-34 yrs	27	16.9%	173	17.5%	585	19.6%	247	16.0%	141	16.4%	1,173	18.0%
35-44 yrs	37	23.1%	142	14.3%	667	22.4%	194	12.6%	115	13.4%	1,155	17.7%
45-54 yrs	39	24.4%	154	15.5%	437	14.6%	200	13.0%	118	13.7%	948	14.5%
55-64 yrs	18	11.3%	134	13.5%	204	6.8%	209	13.6%	87	10.1%	652	10.0%
≥65 yrs	14	8.8%	177	17.9%	94	3.2%	296	19.2%	91	10.6%	672	10.3%
Unknown					1	0.0%			3	0.3%	4	0.1%
Total	160	100.0%	991	100.0%	2,984	100.0%	1,541	100.0%	859	100.0%	6,535	100.0%

Forsyth County Department of Public Health, Epidemiology & Surveillance Unit

¹ Unknown cases: The provider did not complete the age and/or race/ethnicity section of the electronic testing requests to authorized laboratories.

*Totals may be off due to rounding

Table 4. Summary Statistics for Forsyth County, NC Reported Resident Deaths as of September 12, 2020

Total FC Residents who had a reported positive COVID-19 test result	6,535
Total Number of Reported FC COVID-19 Resident Deaths	86
Percentage of FC COVID-19 Cases that resulted in death	1.3%
Total Number of Reported FC COVID-19 Resident Deaths	86
Gender	
Female	39
Male	47
Age Group	
≤14yrs	0
15-24 yrs	0
25-34 yrs	2
35-44 yrs	1
45-54 yrs	6
55-64 yrs	19
≥65 yrs	58
Race/Ethnicity	
Asian	1
Black, non-Hispanic/Latino	28
Hispanic/Latino	19
White, non-Hispanic/Latino	38

Forsyth County Department of Public Health, Epidemiology & Surveillance Unit

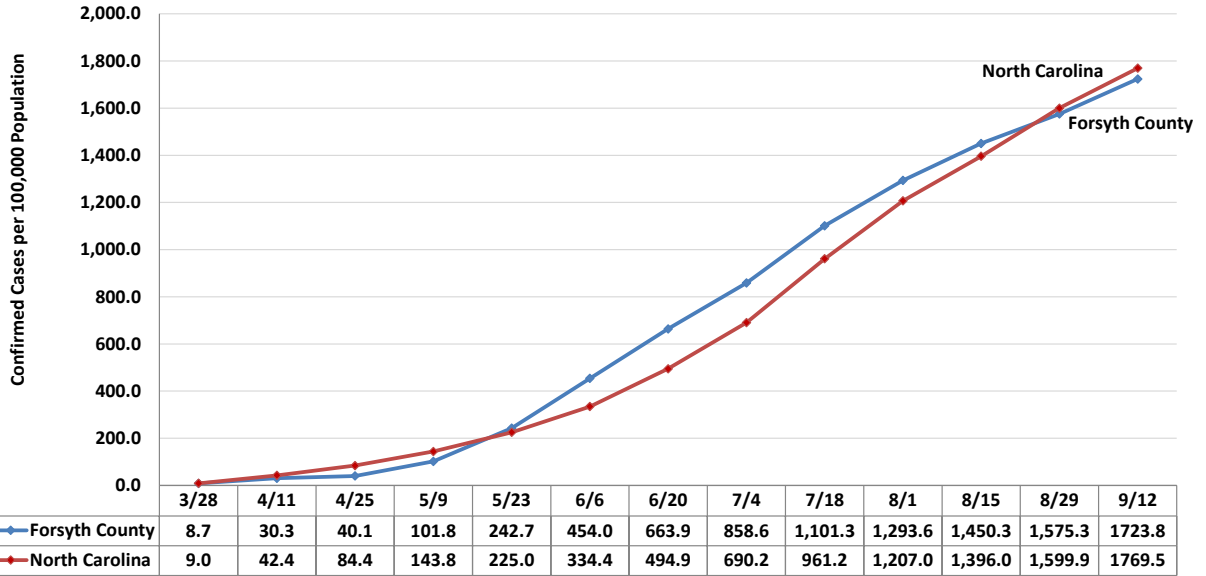
Table 5. Confirmed COVID-19 Cases per 100,000 Population for Forsyth County, Peer Counties & North Carolina as of September 12, 2020

Jurisdiction	Case Count	Rate ¹
Forsyth	6,535	1,723.8
Durham	7,266	2,294.0
Guilford	7,607	1,425.4
Mecklenburg	26,781	2,448.2
Wake	16,219	1,484.8
North Carolina	183,738	1,769.5

Forsyth County Department of Public Health, Epidemiology & Surveillance Unit

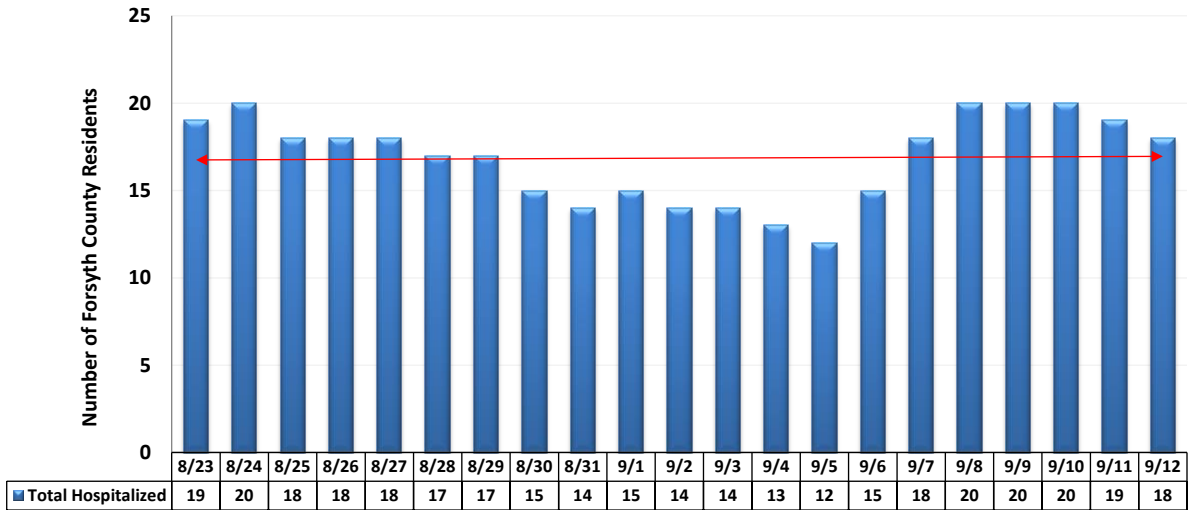
¹Rate is per 100,000 population

Figure 1. Trend in Confirmed COVID-19 Cases per 100,000 Population Forsyth County & North Carolina as of September 12, 2020



Forsyth County Department of Public Health, Epidemiology & Surveillance Unit

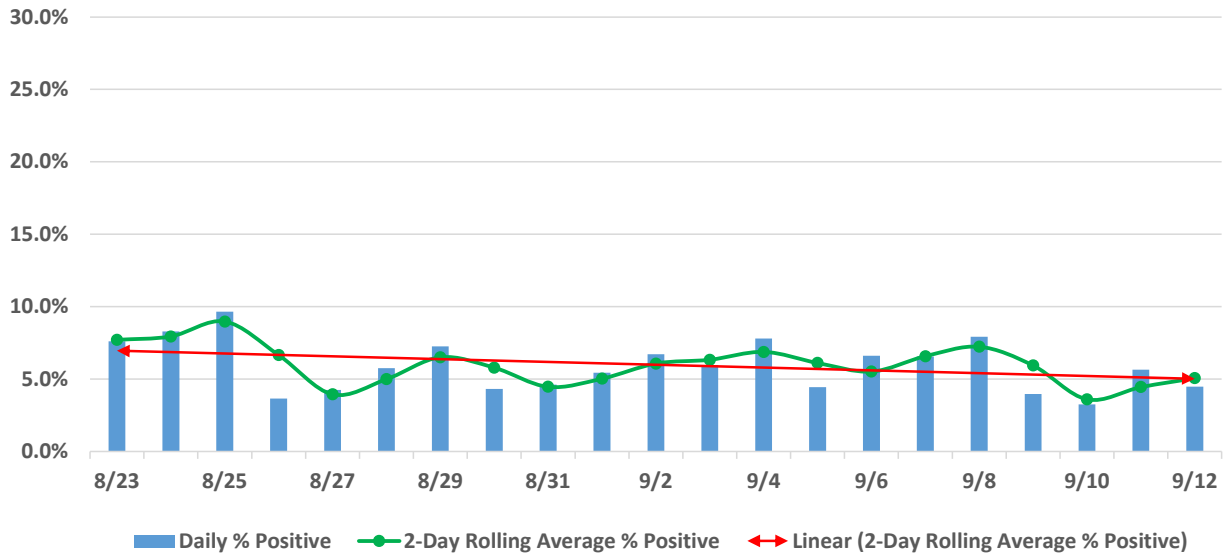
Figure 2. Trend in the Reported Number of Forsyth County, NC Residents who are Hospitalized due to a COVID-19 Diagnosis from August 23, 2020 to September 12, 2020*



*Hospital numbers shown in this chart are from NC COVID, and healthcare partners when provided.

Forsyth County Department of Public Health, Epidemiology & Surveillance Unit

Figure 3. Forsyth County, NC COVID-19 2-Day Rolling Average % Positive
August 23, 2020 to September 12, 2020



Forsyth County Department of Public Health, Epidemiology & Surveillance Unit