

COVID-19 Surveillance for Forsyth County as of February 13, 2021

Table 1. Summary Statistics for Forsyth County, NC Total COVID-19 Cases as of February 13th, 2021

Total # of COVID-19 Cases		29,921
Gender*		
	Female	53.5%
	Male	46.5%
	Unknown ¹	0.0%
Age Group*		
	≤ 4 yrs	2.5%
	5-14yrs	6.3%
	15-24 yrs	19.2%
	25-34 yrs	16.5%
	35-44 yrs	15.3%
	45-54 yrs	14.6%
	55-64 yrs	11.8%
	65-74 yrs	7.2%
	75-84 yrs	4.1%
	85-94 yrs	2.3%
	≥95 yrs	0.3%
	Unknown ¹	0.0%
Race/Ethnicity*		
	Asian	1.5%
	Black, non-Hispanic/Latino	19.6%
	Hispanic/Latino	21.0%
	Native American	0.2%
	White, non-Hispanic/Latino	44.0%
	Unknown ¹	13.8%

Forsyth County Department of Public Health, Epidemiology & Surveillance Unit

Source: NC DHHS/NC COVID, February 15, 2021. Total # of Cases: 29,921 [Positive PCR 28,149; Positive Antigen: 1,772]

¹Unknown cases: The provider did not complete the age and/or race/ethnicity section of the testing requests to authorized labs.

*Totals may be off due to rounding

As of February 13, 2021, 26,599 residents are presumed to have recovered.

Table 2. Zip Code Distribution of Forsyth County, NC Residents who Received a COVID-19 Lab Test as of February 13, 2021

Zip Code ¹	Area	Estimated Pop. Count ²	Reported Total # of Persons Tested ³	Reported % of Pop who have been Tested	Reported Total # of Persons who Tested Positive ³	Reported % of Pop who Tested Positive	Reported % of Pop who were Tested and had a Positive Diagnosis ⁴	Rate per 1,000 Pop for FC Pop who have been Tested	Rate per 1,000 Pop for FC Pop who Tested Positive
27009	Belews Creek	2,647	1,110	41.9%	220	8.3%	19.8%	419.3	83.1
27010	Bethania	359	113	31.5%	6	1.7%	5.3%	314.8	16.7
27012	Clemmons ⁴	20,563	12,165	59.2%	1,887	9.2%	15.5%	591.6	91.8
27023	Lewisville ⁴	13,999	6,177	44.1%	832	5.9%	13.5%	441.2	59.4
27040	Pfafftown ⁴	10,893	5,763	52.9%	842	7.7%	14.6%	529.1	77.3
27045	Rural Hall ⁴	3,216	4,688	145.8%	830	25.8%	17.7%	1,457.7	258.1
27050	Tobaccoville	2,680	1,388	51.8%	214	8.0%	15.4%	517.9	79.9
27051	Walkertown	5,150	3,426	66.5%	581	11.3%	17.0%	665.2	112.8
27101	Winston-Salem ⁴	18,902	11,361	60.1%	1,541	8.2%	13.6%	601.0	81.5
27103	Winston-Salem ⁴	33,208	19,121	57.6%	2,610	7.9%	13.6%	575.8	78.6
27104	Winston-Salem ⁴	28,485	16,558	58.1%	2,134	7.5%	12.9%	581.3	74.9
27105	Winston-Salem ⁴	39,569	19,453	49.2%	3,348	8.5%	17.2%	491.6	84.6
27106	Winston-Salem ⁴	45,015	26,457	58.8%	3,619	8.0%	13.7%	587.7	80.4
27107	Winston-Salem ⁴	46,963	16,273	34.7%	3,208	6.8%	19.7%	346.5	68.3
27127	Winston-Salem ⁴	34,139	16,153	47.3%	2,870	8.4%	17.8%	473.2	84.1
27284	Kernersville ⁴	51,136	21,934	42.9%	3,926	7.7%	17.9%	428.9	76.8
		356,924	182,140	51.0%	28,668	8.0%	15.7%	510.3	80.3

Forsyth County Department of Public Health, Epidemiology & Surveillance Unit

Source: NC DHHS, NC COVID, February 15, 2021. Total number of cases: 29,921 (RT-PCR: 28,149, Antigen: 1,772)

¹ Excludes areas of High Point, Germantown and King that are in Forsyth County

² Estimated population counts for zip codes are from the Bureau of Census, Census Data by Zip Code. Except for Belews Creek (2012 population estimate), all other estimates are for 2018.

³ Differences in total number of residents who had a positive COVID-19 lab (1,253) and number of residents who received a COVID-19 lab test (14,198) are due to incomplete street addresses and/or zip codes that were omitted because the majority of their populations are in neighboring counties

⁴ Data from these zip codes should be used carefully because they include testing data from congregate living facilities' residents who may not have been included in the Bureau of Census' population estimate.

Table 3. Race/Ethnicity-specific Summary Statistics for Forsyth County, NC COVID-19 Positive Lab Results Based on Age Groups as of February 13, 2021*

Race/Ethnicity/ Age Groups	Asian		Black, non-Hispanic/Latino		Hispanic/Latino		White, non-Hispanic/Latino		Unknown ²		Total	
	Case Count	%	Case Count	%	Case Count	%	Case Count	%	Case Count	%	Case Count	%
≤14yrs	25	5.7%	486	8.3%	883	14.1%	858	6.5%	387	9.3%	2,639	8.8%
15-24 yrs	94	21.5%	942	16.0%	1,400	22.3%	2,490	18.9%	810	19.4%	5,736	19.2%
25-34 yrs	84	19.2%	1,086	18.5%	1,112	17.7%	1,966	14.9%	677	16.2%	4,925	16.5%
35-44 yrs	89	20.4%	851	14.5%	1,309	20.9%	1,701	12.9%	612	14.7%	4,562	15.2%
45-54 yrs	77	17.6%	924	15.7%	921	14.7%	1,852	14.1%	599	14.3%	4,373	14.6%
55-64 yrs	39	8.9%	761	13.0%	410	6.5%	1,780	13.5%	549	13.1%	3,539	11.8%
≥65 yrs	29	6.6%	824	14.0%	242	3.9%	2,509	19.1%	537	12.9%	4,141	13.8%
Unknown					1	0.0%		0.0%	5	0.1%	6	0.0%
Total	437	100.0%	5,874	100.0%	6,278	100.0%	13,156	100.0%	4,176	100.0%	29,921	100.0%

Forsyth County Department of Public Health, Epidemiology & Surveillance Unit

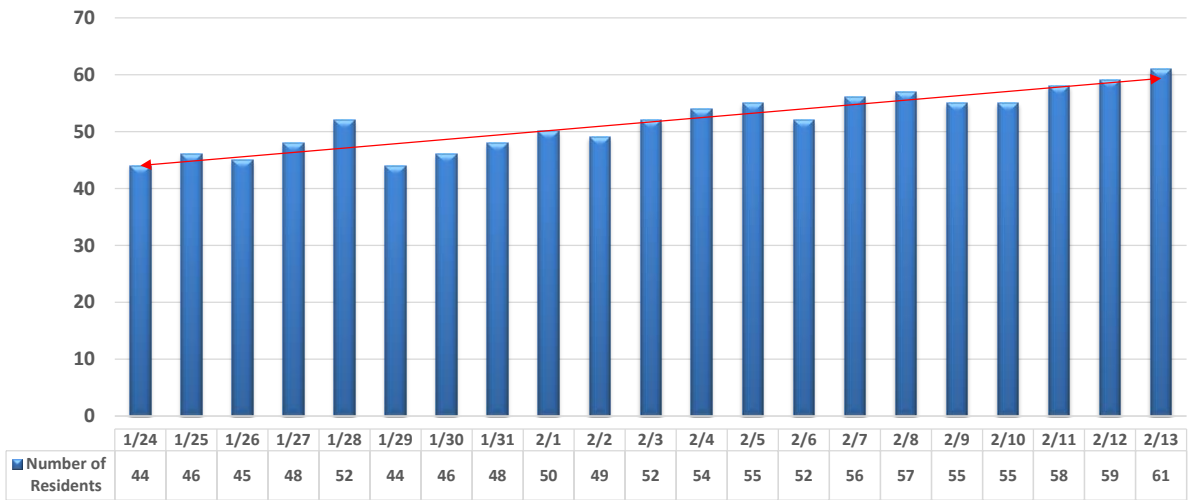
Source: NC DHHS/NC COVID, February 15, 2021

¹ The Native American race/ethnicity-specific category is omitted because the case count in each age group is less than 20.

² Unknown cases: The provider did not complete the age and/or race/ethnicity section of the testing requests to authorized laboratories.

*Percentage(s) may be off due to rounding.

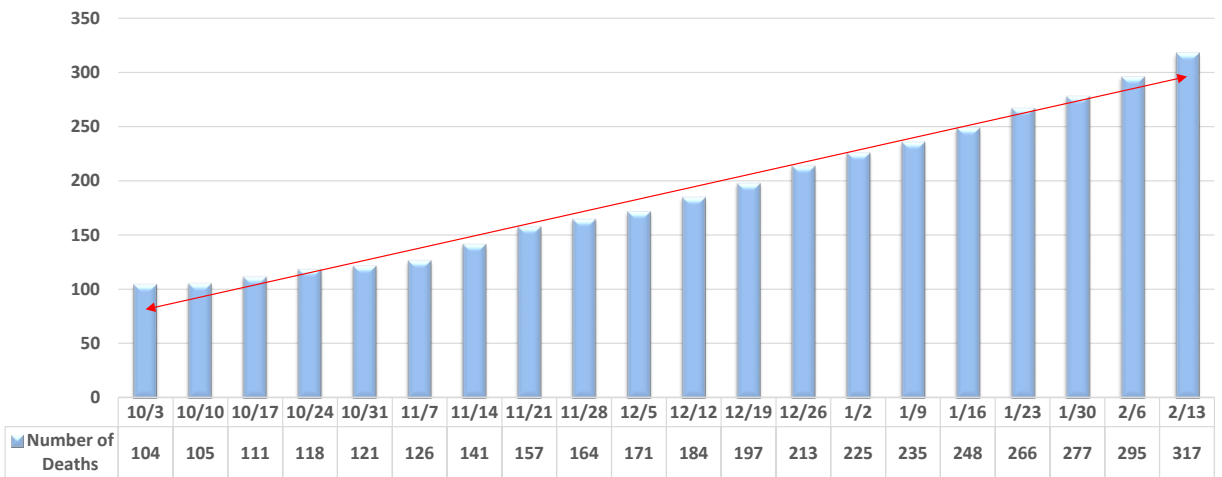
Figure 1. Trend in the Reported Number of Forsyth County, NC Residents who are Hospitalized due to a COVID-19 Diagnosis as of February 13, 2021*



*Hospital numbers shown in this chart are from NC COVID, and healthcare partners when provided

Forsyth County Department of Public Health, Epidemiology & Surveillance Unit

Figure 2. Trend in the Number of Forsyth County, NC Resident Deaths due to COVID-19 as of February 13, 2021



Forsyth County Department of Public Health, Epidemiology & Surveillance Unit

Table 4. Summary Statistics for Forsyth County, NC Reported COVID-19 Resident Deaths as of February 13, 2021

Total Number of FC COVID-19 Cases		29,921
Total Number of Reported FC COVID-19 Resident Deaths		317
Percentage of FC COVID-19 Cases that resulted in death		1.1%
Gender		
	Female	147
	Male	170
Age Group		
	≤ 4 yrs	0
	5-14yrs	1
	15-24 yrs	0
	25-34 yrs	2
	35-44 yrs	3
	45-54 yrs	18
	55-64 yrs	48
	65-74 yrs	57
	75-84 yrs	82
	85-94 yrs	90
	≥95 yrs	16
Race/Ethnicity		
	Asian	2
	Black, non-Hispanic/Latino	91
	Hispanic/Latino	27
	White, non-Hispanic/Latino	187
	¹ Unknown	10

Forsyth County Department of Public Health, Epidemiology & Surveillance Unit

Source: NC DHHS/NC COVID, February 15, 2021

¹Unknown cases: The provider did not complete the age and/or race/ethnicity section of the testing requests to authorized labs.

Table 5. Confirmed COVID-19 Cases per 100,000 Population for Forsyth County, Peer Counties & North Carolina as of February 13, 2021

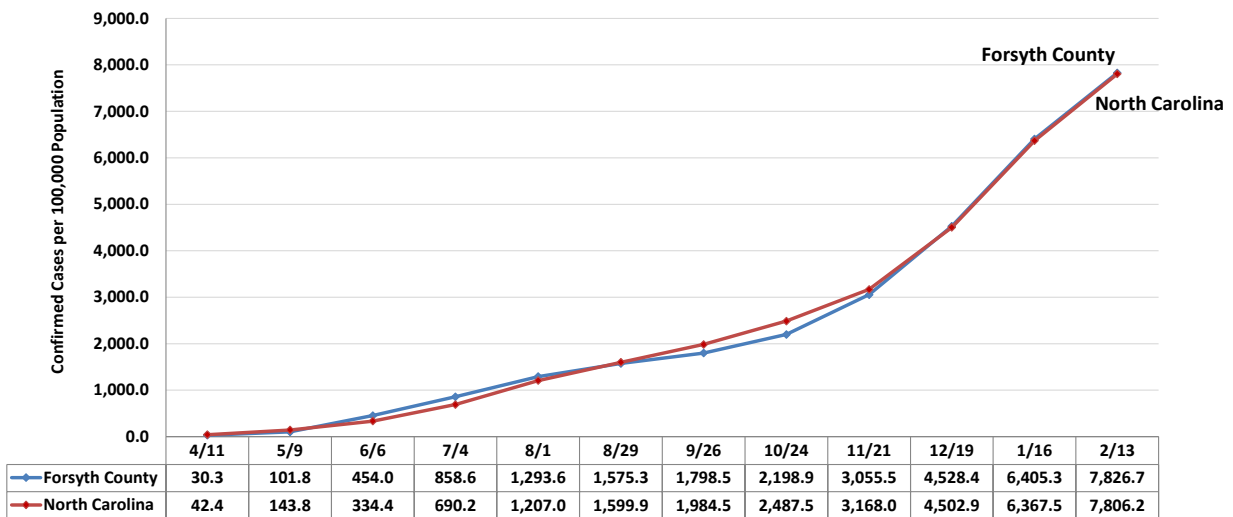
Jurisdiction	Case Count	Rate ¹
Forsyth	29,921	7,826.7
Durham	20,642	6,420.8
Guilford	38,006	7,075.2
Mecklenburg	92,441	8,325.3
Wake	70,940	6,380.9
North Carolina	818,724	7,806.2

Forsyth County Department of Public Health, Epidemiology & Surveillance Unit

Source: NC DHHS/NC COVID, February 15, 2021

¹Rate is per 100,000 population (July 1, 2019 population estimate)

Figure 3. Trend in Confirmed COVID-19 Cases per 100,000 Population Forsyth County & North Carolina as of February 13, 2021*



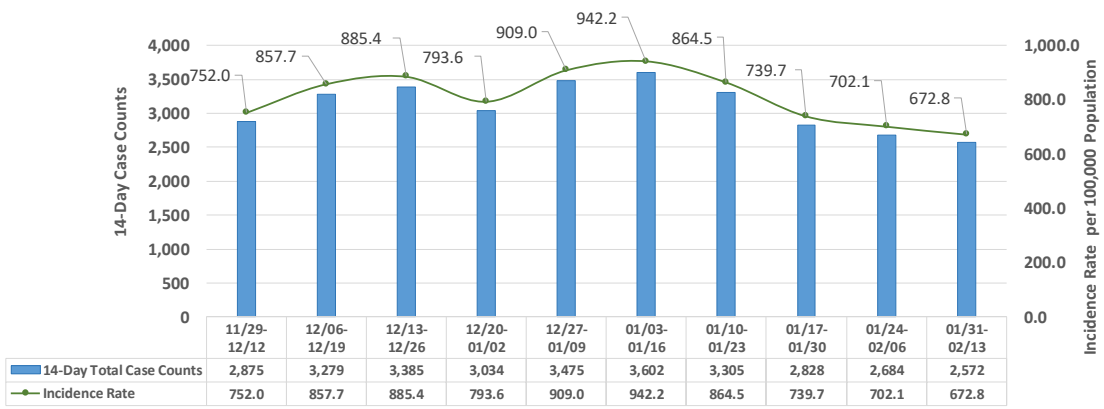
*Rate calculations for w/e October 17, 2020 and after are based on July 1, 2019 population estimates. All previous rate calculations are based on July 1, 2018 population

Table 6

Indicators	Lowest risk of transmission in schools	Lower risk of transmission in schools	Moderate risk of transmission in schools	Higher risk of transmission in schools	Highest risk of transmission in schools
Core Indicators					
Number of new cases per 100,000 persons within the last 14 days*	<5	5 to <20	20 to <50	50 to ≤ 200	>200
Percentage of RT-PCR tests that are positive during the last 14 days**	<3%	3% to <5%	5% to <8%	8% to ≤ 10%	>10%
Ability of the school to implement 5 key mitigation strategies: <ul style="list-style-type: none"> • Consistent and correct use of masks • Social distancing to the largest extent possible • Hand hygiene and respiratory etiquette • Cleaning and disinfection • Contact tracing in collaboration with local health department Schools should adopt the additional mitigation measures outlined below to the extent possible, practical and feasible.	Implemented all 5 strategies correctly and consistently	Implemented all 5 strategies correctly but inconsistently	Implemented 3-4 strategies correctly and consistently	Implemented 1-2 strategies correctly and consistently	Implemented no strategies

Important note: All three indicators should be incorporated to inform decisions. Regardless of what the first two indicators determine, it is critical to ensure the use and integration of mitigation strategies. Based on current WSFC school system practices, all 5 mitigation strategies are in place.

Figure 4. Number of New Cases per 100,000 Population During the Last 14 Days, Forsyth County, NC*

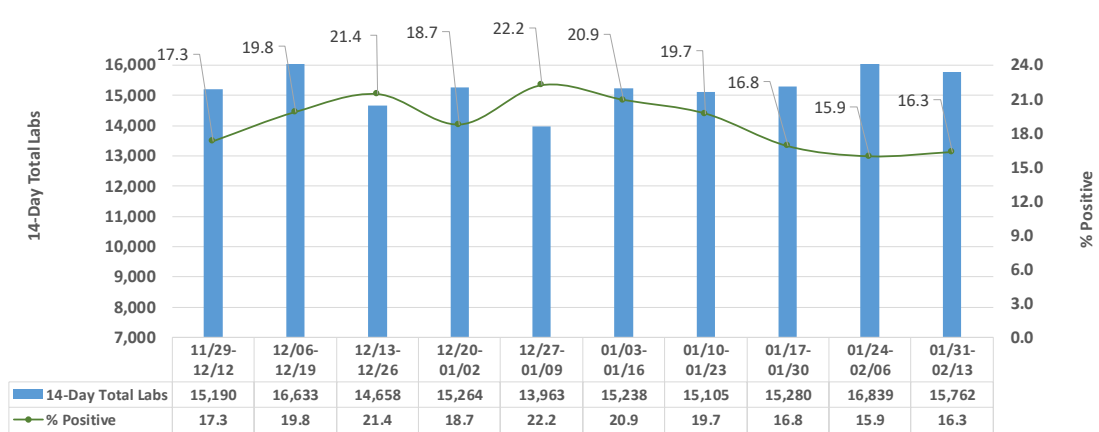


*Calculated by adding the number of new cases for residents in the county in the last 14 days, then dividing by the 2019 county population estimate (382,295), and then multiplying by 100,000.

Data Source: NC DHHS, NC COVID, February 15, 2021

Important note: All three indicators should be incorporated to inform decisions. Regardless of what the first two indicators determine, it is critical to ensure the use and integration of mitigation strategies. Based on current WSFC school system practices, all 5 mitigation strategies are in place.

Figure 5. Percentage of Tests that are Positive During the Last 14 Days, Forsyth County, NC*



*% Positive: Calculated by adding the number of new RT-PCR Cases for county residents in the last 14 days, and dividing by total number of new RT-PCR labs for county residents in the last 14 days, and then multiplying by 100.

Data Source: NC DHHS, NC COVID, February 15, 2021

Important note: All three indicators should be incorporated to inform decisions. Regardless of what the first two indicators determine, it is critical to ensure the use and integration of mitigation strategies. Based on current WSFC school system practices, all 5 mitigation strategies are in place.