

**COVID-19 Surveillance for Forsyth County, NC as of August 8, 2020**

**Table 1. Summary Statistics for Forsyth County, NC Total Positive COVID-19 Tests as of August 8, 2020**

<b>Total FC Residents who were tested and had a positive result</b>		<b>5,215</b>
<b>Gender*</b>		
	Female	51.7%
	Male	48.3%
<b>Age Group*</b>		
	≤14yrs	9.9%
	15-24 yrs	18.4%
	25-34 yrs	18.9%
	35-44 yrs	18.6%
	45-54 yrs	15.0%
	55-64 yrs	10.1%
	≥65 yrs	9.1%
	Unknown <sup>2</sup>	0.0%
<b>Race/Ethnicity*</b>		
	Asian	2.7%
	Black, non-Hispanic/Latino	14.2%
	Hispanic/Latino	52.0%
	White, non-Hispanic/Latino	17.0%
	Unknown <sup>2</sup>	14.2%

Forsyth County Department of Public Health, Epidemiology & Surveillance Unit

<sup>1</sup>This number does not reflect all Forsyth County residents who received a COVID-19

<sup>2</sup>Unknown cases: The provider did not complete the gender, age and/or race/ethnicity section of the testing requests to authorized labs.

\*Totals may be off due to rounding

Table 2. Zip Code Distribution of Forsyth County, NC Residents who Received a COVID-19 Lab Test as of August 8, 2020

Zip Code <sup>1</sup>	Area	Estimated Pop. Count <sup>2</sup>	Total # of Persons Tested <sup>3</sup>	% of Pop who have been Tested <sup>*</sup>	Total # of Persons who Tested Positive <sup>3</sup>	% of Pop who Tested positive <sup>*</sup>	% of Pop who were Tested and had a Positive Diagnosis <sup>*</sup>	Rate per 1,000 Pop for FC Pop who have been tested	Rate per 1,000 Pop for FC Pop who Tested Positive
27009	Belews Creek	2,647	225	8.5%	12	0.5%	5.3%	85.0	4.5
27010	Bethania	359	30	8.4%	2	0.6%	6.7%	83.6	5.6
27012	Clemmons	20,563	2,943	14.3%	183	0.9%	6.2%	143.1	8.9
27023	Lewisville	13,999	1,246	8.9%	114	0.8%	9.1%	89.0	8.1
27040	Pfafftown	10,893	1,150	10.6%	83	0.8%	7.2%	105.6	7.6
27045	Rural Hall	3,216	1,058	32.9%	133	4.1%	12.6%	329.0	41.4
27050	Tobaccoville	2,680	356	13.3%	24	0.9%	6.7%	132.8	9.0
27051	Walkertown	5,150	770	15.0%	70	1.4%	9.1%	149.5	13.6
27101	Winston-Salem	18,901	2,464	13.0%	234	1.2%	9.5%	130.4	12.4
27103	Winston-Salem	33,208	3,938	11.9%	446	1.3%	11.3%	118.6	13.4
27104	Winston-Salem	28,485	3,301	11.6%	347	1.2%	10.5%	115.9	12.2
27105	Winston-Salem	39,568	5,231	13.2%	890	2.2%	17.0%	132.2	22.5
27106	Winston-Salem	45,015	5,101	11.3%	622	1.4%	12.2%	113.3	13.8
27107	Winston-Salem	46,963	5,576	11.9%	864	1.8%	15.5%	118.7	18.4
27109	Winston-Salem	2,539	25	1.0%	4	0.2%	16.0%	9.8	1.6
27127	Winston-Salem	34,138	4,565	13.4%	626	1.8%	13.7%	133.7	18.3
27284	Kernersville	51,136	4,604	9.0%	484	0.9%	10.5%	90.0	9.5
		359,460	42,583	11.8%	5,138	1.4%	12.1%	118.5	14.3

Forsyth County Department of Public Health, Epidemiology &amp; Surveillance Unit

<sup>1</sup> Excludes areas of High Point, Germanton and King that are in Forsyth County<sup>2</sup> Estimated population counts for zip codes are from the Bureau of Census, Census Data by Zip Code. Except for Belews Creek (2012 population estimate), all other estimates are for 2018.<sup>3</sup> Differences in total number of residents tested (92) and total number of residents who had a positive lab (77) are due to incomplete street addresses and/or zip codes that were omitted because the majority of their populations are in neighboring counties.<sup>\*</sup> Totals may be off due to rounding

Table 3. Race/Ethnicity-specific Summary Statistics for Forsyth County, NC COVID-19 Positive Lab Results Based on Age Groups as of August 8, 2020

Race/Ethnicity/ Age Groups	Asian		Black, non-Hispanic/Latino		Hispanic/Latino		White, non-Hispanic/Latino		Unknown <sup>1</sup>		Total	
	Case Count	%	Case Count	%	Case Count	%	Case Count	%	Case Count	%	Case Count	%
≤14yrs	4	2.9%	53	7.2%	358	13.2%	50	5.6%	52	7.0%	517	9.9%
15-24 yrs	17	12.3%	108	14.6%	549	20.3%	122	13.8%	163	22.0%	959	18.4%
25-34 yrs	24	17.4%	143	19.4%	534	19.7%	152	17.2%	133	17.9%	986	18.9%
35-44 yrs	33	23.9%	100	13.5%	606	22.4%	119	13.4%	111	15.0%	969	18.6%
45-54 yrs	36	26.1%	110	14.9%	394	14.5%	131	14.8%	111	15.0%	782	15.0%
55-64 yrs	15	10.9%	101	13.7%	187	6.9%	139	15.7%	83	11.2%	525	10.1%
≥65 yrs	9	6.5%	124	16.8%	80	3.0%	173	19.5%	89	12.0%	475	9.1%
Unknown					2	0.1%					2	0.0%
<b>Total</b>	<b>138</b>	<b>100.0%</b>	<b>739</b>	<b>100.0%</b>	<b>2,710</b>	<b>100.0%</b>	<b>886</b>	<b>100.0%</b>	<b>742</b>	<b>100.0%</b>	<b>5,215</b>	<b>100.0%</b>

Forsyth County Department of Public Health, Epidemiology &amp; Surveillance Unit

<sup>1</sup> Unknown cases: The provider did not complete the race/ethnicity section of the electronic testing requests to authorized laboratories.

**Table 4. Summary Statistics for Forsyth County, NC Reported Resident Deaths as of August 8, 2020**

Total FC Residents who had a reported positive COVID-19 test	5,215
<b>Total Number of Reported FC COVID-19 Resident Deaths</b>	<b>52</b>
Percentage of FC COVID-19 Cases that resulted in death	1.0%
<b>Total Number of Reported FC COVID-19 Resident Deaths</b>	
Gender	
Female	20
Male	32
Age Group	
≤14yrs	0
15-24 yrs	0
25-34 yrs	2
35-44 yrs	0
45-54 yrs	5
55-64 yrs	13
≥65 yrs	32
Race/Ethnicity	
Asian	1
Black, non-Hispanic/Latino	14
Hispanic/Latino	14
White, non-Hispanic/Latino	20
Unknown <sup>1</sup>	3

Forsyth County Department of Public Health, Epidemiology & Surveillance Unit

<sup>1</sup>Unknown cases: The provider did not complete the race/ethnicity section of the electronic testing requests to authorized labs.

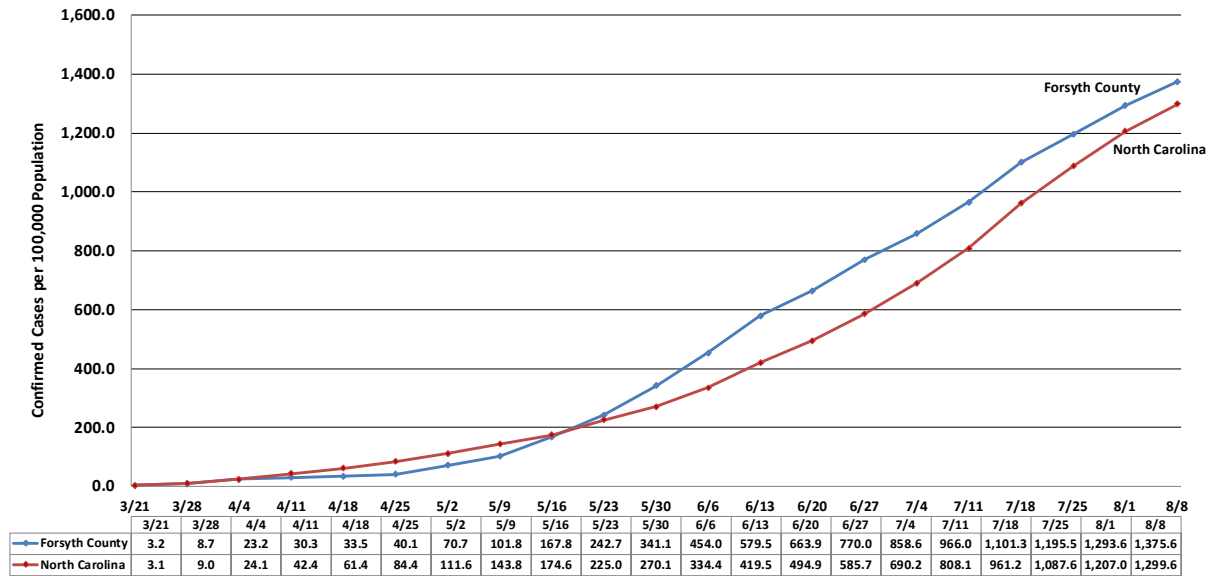
**Table 5. Confirmed COVID-19 Cases per 100,000 Population for Forsyth County, Peer Counties & North Carolina as of August 8, 2020**

Jurisdiction	Case Count	Rate <sup>1</sup>
Forsyth	5,215	1,375.6
Durham	6,114	1,930.3
Guilford	5,580	1,045.6
Mecklenburg	22,066	2,017.2
Wake	11,906	1,090.0
North Carolina	134,948	1,299.6

Forsyth County Department of Public Health, Epidemiology & Surveillance Unit

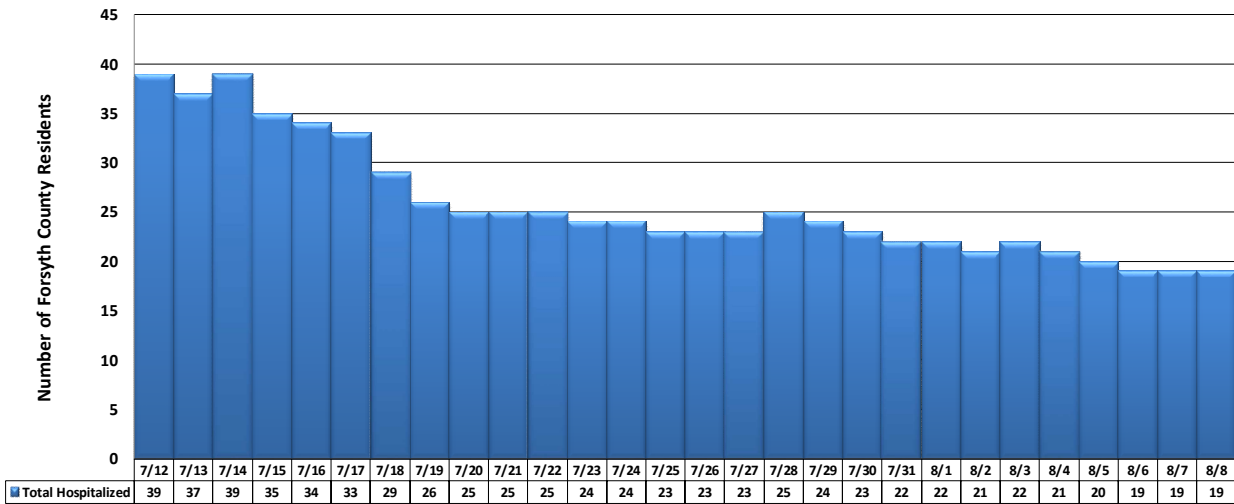
<sup>1</sup>Rate is per 100,000 population

**Figure 1. Trend in Confirmed COVID-19 Cases per 100,000 Population  
Forsyth County & North Carolina as of August 8, 2020**



Forsyth County Department of Public Health, Epidemiology & Surveillance Unit

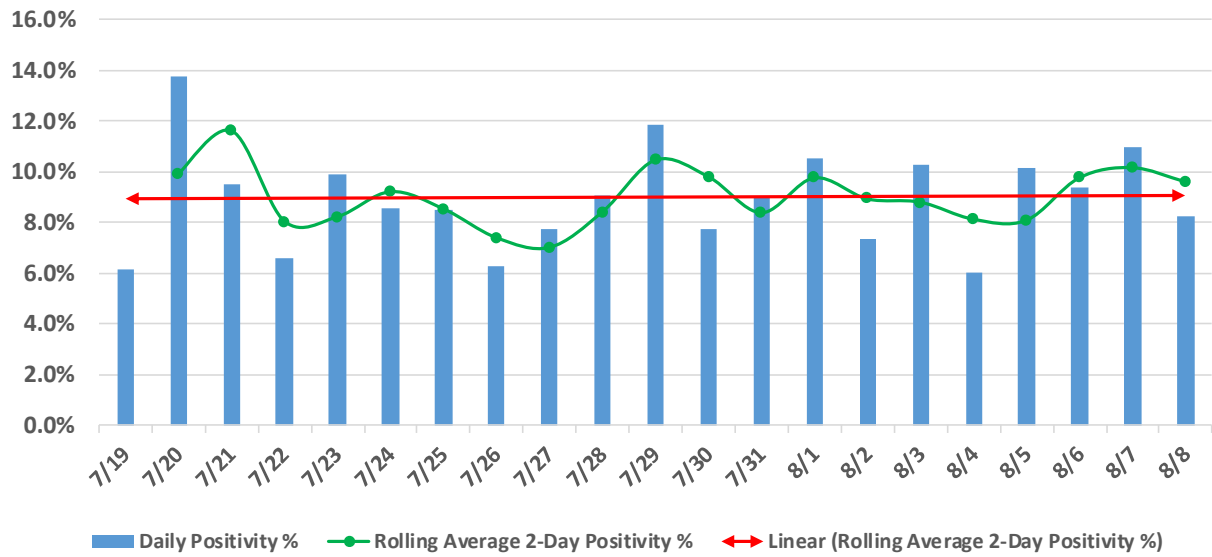
**Figure 2. Trend in the Reported Number of Forsyth County, NC Residents who are Hospitalized due to a COVID-19 Diagnosis from July 12, 2020 to August 8, 2020\***



\*Hospital numbers shown in this chart are from NCEDSS, and healthcare partners when provided

Forsyth County Department of Public Health, Epidemiology & Surveillance Unit

**Figure 3. Forsyth County, NC Rolling Average 2-Day Positivity %  
July 19, 2020 to August 8, 2020**



Forsyth County Department of Public Health. Epidemiology & Surveillance Unit